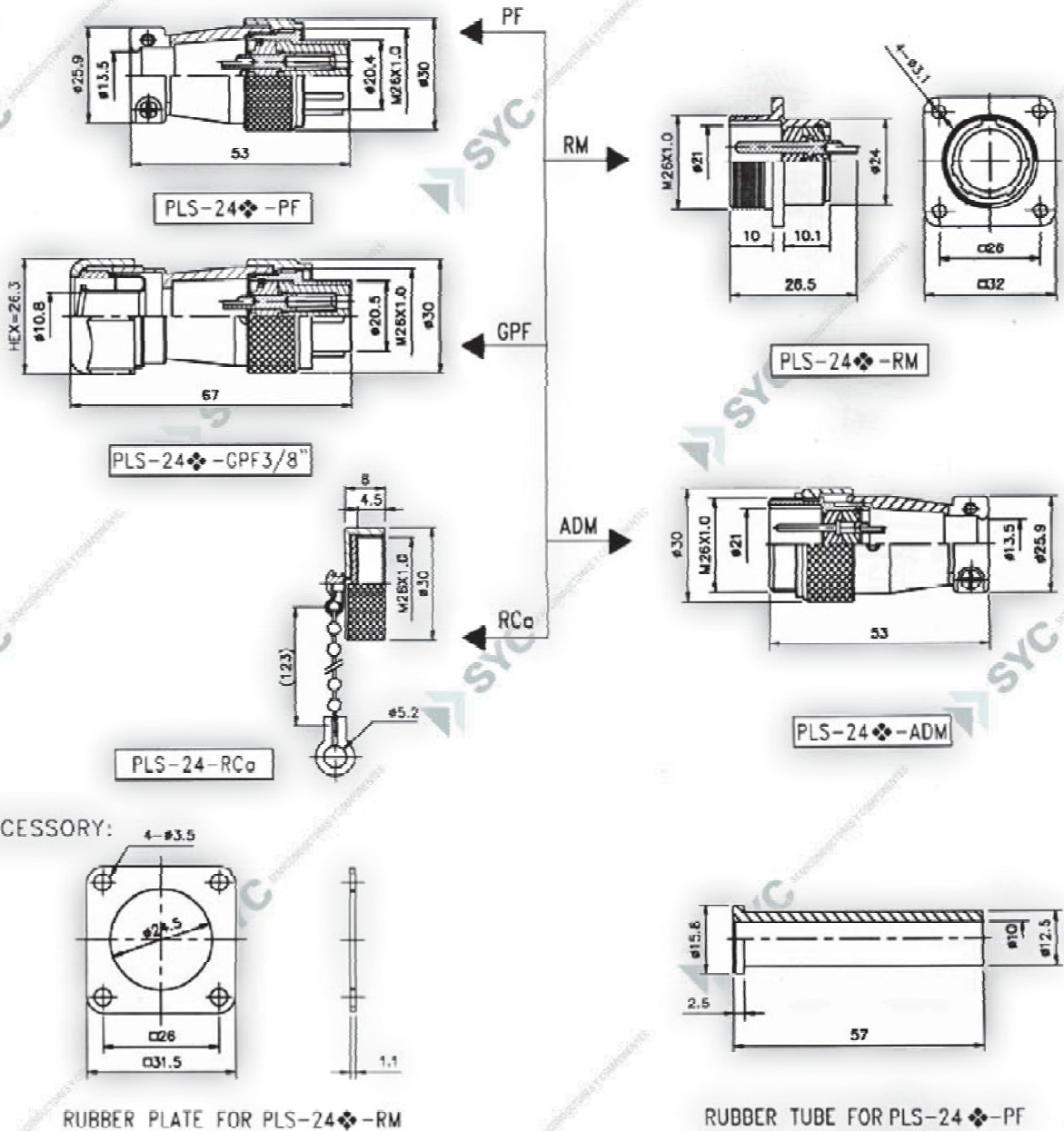



CODIGO

PLS-2410-XX

DESCRIPCION

Conector tipo industrial serie PLS de 10 vias



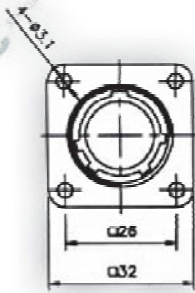
◆ No. of contacts	10								
Contacts Configuration									
Rated current/voltage	10A 250V								
Operation limit voltage (AC.V.rms)	250								
Withstanding voltage (AC.V.rms) 1 minute	1000								
Insulation resistance (MΩ MIN.) at DC 500V	2000								
Contact resistance (mΩ MAX.) at DC 1A	3								
Pin diameter (φmm)	1.6								

CODIGO

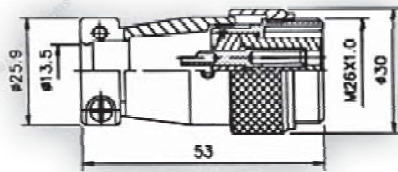
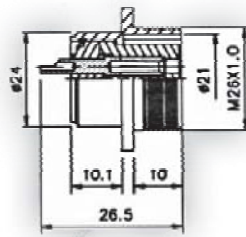
PLS-2410-XX

DESCRIPCION

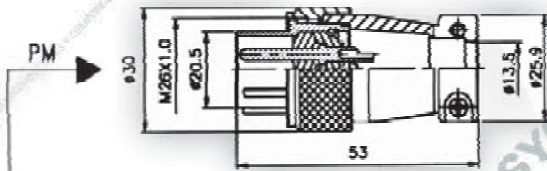
Conector tipo industrial serie PLS de 10 vias



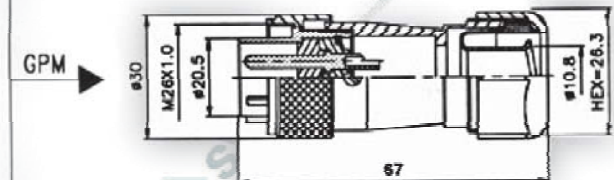
PLS-24-RF



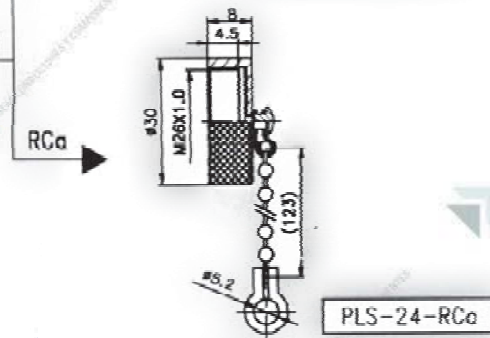
PLS-24-ADF



PLS-24-PM

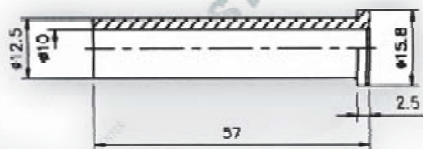


PLS-24-GPM3/8"

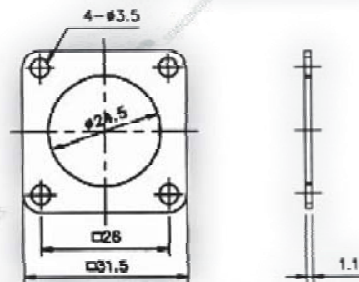


PLS-24-RCa


ACCESSORY:



RUBBER TUBE FOR PLS-24-PM



RUBBER PLATE FOR PLS-24-RF

◆ No. of contacts	10						
Contacts Configuration							
Rated current/voltage	10A 250V						
Operation limit voltage (AC.V.rms)	250						
Withstanding voltage (AC.V.rms) 1 minute	1000						
Insulation resistance (MΩ MIN.) at DC 500V	2000						
Contact resistance (mΩ MAX.) at DC 1A	3						
Pin diameter (φmm)	1.6						